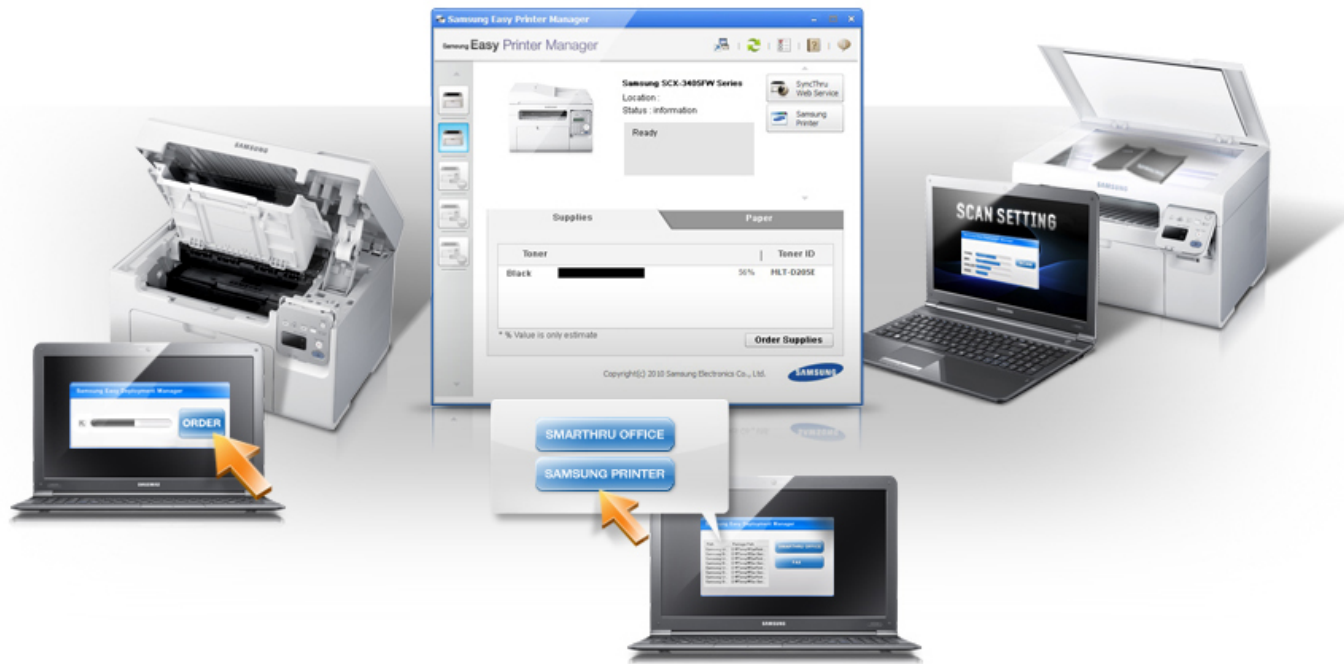


SAMSUNG

How to setup samsung scx-3405w wireless

Document has moved here





This video will provide the steps to setup and install the SCX 3405W. Wireless Printer Setup via. SAMSUNG SCX Series MFC / All.. Troubleshooting Guide. Select Using a USB cable for the wireless setup method and click Next. Samsung printers do not currently have 5Ghz.. . please check your wireless setup. You cannot use infrastructure mode and ad hoc mode at the same time for Samsung wireless network machines.. Samsung SCX-3405W review. One-touch wireless connection; Manufacturer: Samsung;. where the SCX-3405W is a wireless version of the entry-level model.. Samsung SCX-3400, SCX-3400F, SCX-3405/XSG, SCX-3405F, SCX-3405FH, SCX-3405FW, SCX-3405HW, SCX-3405W User Guide. Wireless network setup. Samsung SCX-3405W All-in-One laser printer driver with its quick print facility is a wireless version and part of Samsung family which is one of the world.. Wi-Fi Direct is an easy-to-setup peer-to. The Group Owner acts similar to a wireless. a mobile printing application like the Samsung Mobile.. This video will guide you how to set up the SCX 3405W s driver in wifi direct mode all the way up to the actual print out via wireless direct.. SAMSUNG SCX-3405W Quick and easy printing meets. Setup is a cinch. you would have to spend time creating a wireless network name and manually.. . Visit Samsung today for SCX-3405W Black. Black & White Laser Multifunction Printer - 21 PPM. Samsung Easy Wireless Setup will help you.